

SO YOU'VE CREATED ARTWORK AND WANT TO PRINT IT ON A T-SHIRT?

 **Follow** THESE INSTRUCTIONS!

CUSTOMER SUPPLIED ARTWORK

Customer Supplied Artwork works like this. **YOU** create the artwork and we print it! There's just a few parameters to follow!

ACCEPTABLE FORMATS

VECTOR ARTWORK

These are the **ONLY** types of files that we do not have to recreate if they are sent properly. Artwork **MUST** be created in the program, not simply dropped in from another program. These files will be checked by an artist to ensure garment/production friendliness and proper useability. **ADDITIONAL ART TIME WILL APPLY** if the file needs to be set up within our parameters.

Some of the programs that best work are:

Adobe Illustrator CS4 (.ai)

Adobe Illustrator CS5 (.ai) (needs to be saved as a CS4 compatible file)

Freehand MX (.fh11)

EPS (need to be saved as a CS4 compatible file)



IF YOU ARE SENDING FILES WITH THESE FORMATS, INCLUDE HIGH RESOLUTION .JPGS FOR OUR STAFF TO PREVIEW AND ENSURE WE HAVE THE CORRECT ARTWORK!

OTHER FORMATS

PHOTOSHOP FILES

Photoshop files can sometimes be used as Customer Supplied Art. They carry an additional charge for set up and separation. These files will be checked by an artist to ensure proper execution for garment/production friendliness. **ADDITIONAL ART TIME WILL APPLY** if the file needs to be set up within our parameters.

TO HELP BETTER PREPARE YOUR FILE FOLLOW THESE GUIDELINES

- Art must be created at the final print size at 300dpi
- Art must be in layers
- Type must be rasterized



FOLLOWING THESE SPECIFICATIONS DO NOT ENSURE THAT IT IS A USEABLE FILE. THEY HELP REDUCE THE ART TIME NEEDED TO PREPARE IT FOR GARMENT/PRODUCTION SPECS.

UNUSEABLE FORMATS

Artwork not following the previous guidelines and cannot be deemed as Customer Supplied Artwork and need to follow an Hourly Artwork product. They will need to be re-created by the in-house art department. Some files require more time than others to recreate. At this point an artist will view the submitted artwork and determine:

- Useability
- Time needed to recreate the artwork

The following are some commonly submitted files that **CANNOT BE DEEMED** as customer supplied art.

MS Word (.doc),	JPEG (.jpg)
Powerpoint (.ppt),	TIFF (.tiff)
Publisher (.pub),	Bitmap (.bmp)
Excel (.xls),	PNG (.png)
Flash(.swf)	

If You...

Created your artwork in Adobe Illustrator CS4

Creating your artwork in Adobe Illustrator CS4 is one of the best ways to create artwork. It mimics what we do here all day!

STEP 1 PREP YOUR FILE!

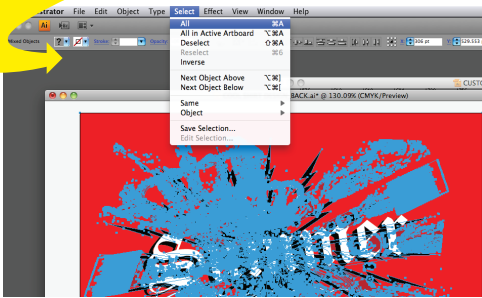
Adobe Illustrator CS4 is probably one of the best ways to create artwork for apparel. But we've gotta get some stuff prepped!

OUTLINE YOUR FONTS

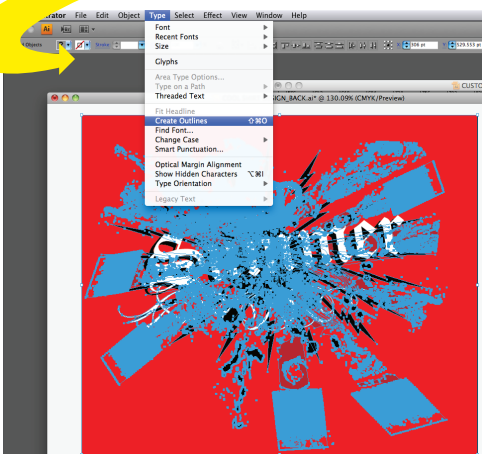
If you've got font's in your design the first thing you gotta do is CREATE OUTLINES.



Click SELECT in the drop down menu. Then click ALL. This will ensure all the objects and fonts are selected so we can outline the fonts. You'll see all these blue lines all over your work, don't worry, that's supposed to happen!



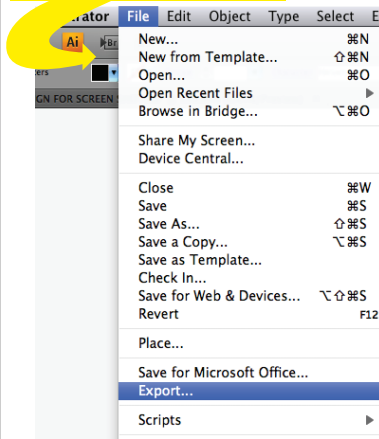
Next click the TYPE drop down menu and select CREATE OUTLINES. Also send us a list of fonts you used in your design in case you want us to make any changes for you!



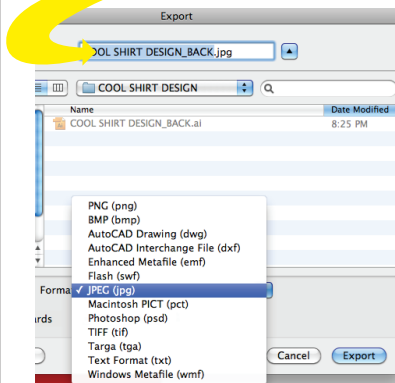
STEP 2 SAVE A .JPG!

The best way to preview how your art is supposed to look like is if you send us a .jpg file to look at as well. It's easy!

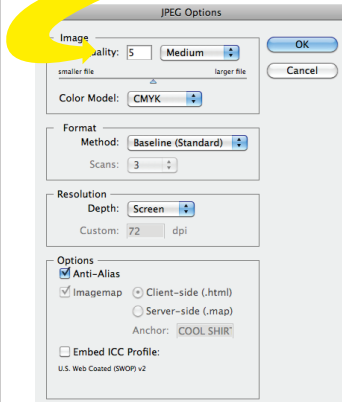
Under FILE click EXPORT



After clicking EXPORT, click the FORMAT drop down menu and select JPEG (jpg). Click the EXPORT button



Then click OK in the JPEG OPTIONS PANEL THAT POPS UP and viola! You've saved a preview of your artwork for us to compare to! Now hurry up and send us those files! We're waiting to print your smokin hot artwork!

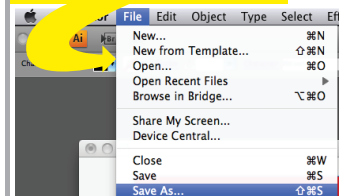


Attention!!!

USING ADOBE ILLUSTRATOR CS5?

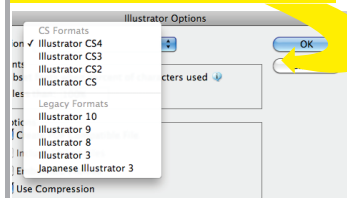
Obviously Adobe makes some great products but we're so busy we haven't had time to upgrade! Therefore if you're using AI CS5 you've gotta save your files a special way so our older program can handle it.

In the FILE drop down click "SAVE AS"



After you've selected where you want to save your file a new dialog box will pop up.

Click the VERSION drop down and select ILLUSTRATOR CS4.



Now follow the instructions to PREP A FILE and SAVE A .JPG and you're all set!